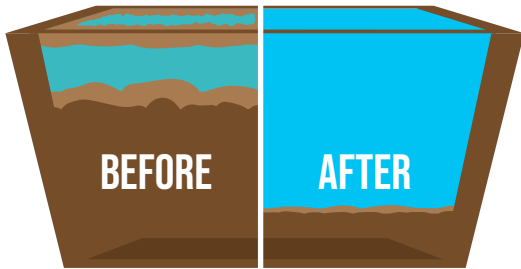




ENVIROZYME

2.0

CODE : ENV -2007



Our special blend of efficient and diverse microbial strains reduce sludge build-up, effectively lengthening the life of your lagoon.

APPLICATIONS

- Lagoons
- Grease traps
- Lift-stations
- Sewer lines
- Manholes
- Septic tanks

USAGE

Proper dosage is crucial for best results. Our team will design a schedule specifically for your system.

Lagoons: Toss pouches directly into the treatment area.

Lift Station: Mix required dosage amount into room temperature water. Let sit for 30 minutes - 1 hour for optimal bacterial activation, then add the product mix to the wastewater to be treated.

Our microbes activate within half an hour. Noticeable results may be visible after as little as 1 month.

One 1 lb pouch can treat up to 1 million gallons of wastewater!*

* May vary based on wastewater quality, flow rate and retention time. See Dosage Table for more information.



Safe and effective cleaning products can be made completely cruelty-free. We perform no animal testing and none of our ingredients contain animal products or by-products.

PROGRESSIVE SCIENCE



Strain A

- High performing strains produce enzymes that efficiently breakdown polymers, proteins, carbohydrates, fats and oils



Strain B

- Efficient in denitrification



Strain C

- Active at pH levels as low as 4.25
- Facultative



Strain D

- Fast germinating strains demonstrate efficient urease and phosphorus solubilizing activity



Strain E

- Produces biosurfactants to reduce surface and interfacial tension
- Grows at temperatures as low as 4°C



Strain F

- Demonstrates antifungal activity

100% BIODEGRADABLE
OECD 301D



LAST UPDATED: 4.11.2018



www.enviroway.ca

2241 Hanselman Ave. Saskatoon, SK S7L 6A7

306-244-7727

TF 1-888-274-0862

GENERAL DOSAGE INSTRUCTIONS

SHOCK DOSAGE ⚡

Lagoon: 3 lb per day for the first week (M – F)¹

Lift station: (<25000 gallons per day): 1.5 lb per day for the first week (M - F)¹

Lift station: (>25000 gallons per day): 3 lb per day for the first week (M – F)¹

Shock doses establish a healthy bacterial population

¹Recommendation may vary based on water quality, retention time & flow rate

MAINTENANCE DOSAGE 🔧

Lagoon: 1 lb per day, 3 days/week (M, W, F); spring – fall¹

Lift Station (<25000 gallons per day): 0.5 lb per day, 3 days/week (M, W, F); year-round¹

Lift Station (>25000 gallons per day): 1 lb per day, 3 days/week (M, W, F); year-round¹

Maintenance doses optimize the established bacterial population in the event of increased water volume, flowrate, etc.

¹Recommendation may vary based on water quality, retention time & flow rate

STORAGE & PRECAUTION



Store in a dry, cool, well-ventilated area



Store away from direct sunlight and heat



Store away from harsh chemicals.

Keep out of reach of children.

SHELF LIFE: minimum 1 year from opening

Wash hands thoroughly after handling. Gloves and eye protection not required but recommended.

For more information or Safety Data Sheets (SDS) please contact us or see our website

PACKAGING

Available in:

1 lb x 30 pouches ENV-2007A

½ lb x 60 pouches ENV-2007B

SPECIFICATIONS

DESCRIPTION	Yellow, free-flowing granular powder
WORKING pH	6.8-8.5
TEMPERATURE	Up to 45°C
MOISTURE	10%
BULK DENSITY	0.5 – 0.61 g/cm ³
BACTERIA	5 billion per gram Blend of 6 strains
NUTRIENT	Biological nutrients and enhancers

QUESTIONS?

Contact us!

Email: techteam@enviroway.net

Phone: (306) 244-7727

